

Product Data Sheet

Actuator 01KS2

01KS2 features its compact design, which is suitable for light load applications in constrained space, such as window opener and partition walls.



Features and Option

Main applications: Medical, Industrial

Standard features:

- Input voltage: 24V DC
- Max. load: 800N (push / pull)
- Max. speed at no load: 16 mm/sec (Typical value)
- Max. speed at full load: 12 mm/sec (Typical value @ 800N Loaded)
- Stroke: 50 ~ 300 mm
- IP Protection level: IP43
- Color: Aluminum gray
- Preset limit switches
- Duty cycle: 10%, max. 2 min. continuous operation in 20 min.
- Ambient operation temperature: -25°C ~ +65°C
- Certified: CE marking, EMC Directive 2014/30/EU

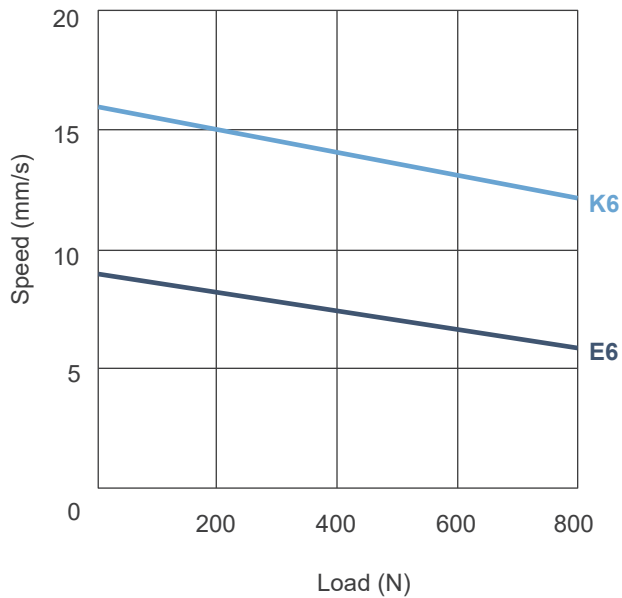
Option:

- IP54 Protection level

Performance Data

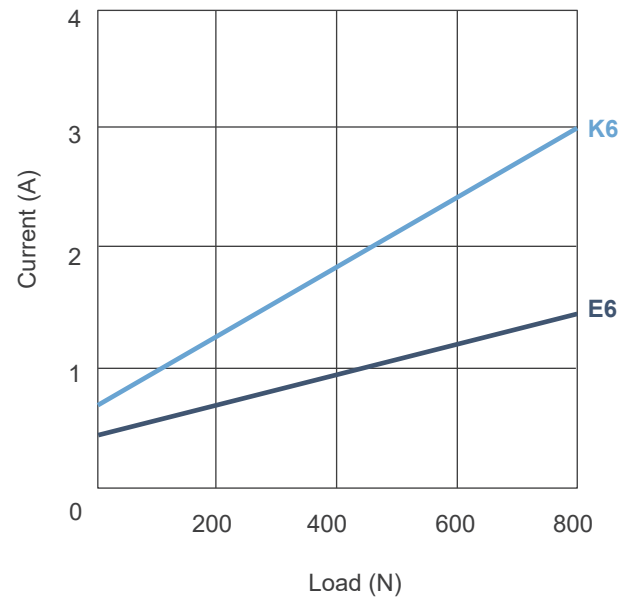
Model No.	Push / Pull Max. (N)	*Typical Speed (mm/s)		*Typical Current (A)		Noise level (dB)
		No load	Full load	No load	Full load	
01KS2-24-30-E6-XXX-CXX-XX-XX	800	9	6	0.4	1.4	≅ 55
01KS2-24-30-K6-XXX-CXX-XX-XX	800	16	12	0.7	3.0	≅ 70

Speed vs. Load



Current vs. Load

24V DC



Remarks:

- * The typical speed or typical current means the average value neither upper limit nor lower limit. The performance curves are made with typical values.

Compatibility

Product	Model	01KS2 spec
Control box	T control, 01XA1, 01XA2, 01XVR2, 01XV3T, 01XV4N	- Without positioning sensor feedback - F-type 4-pin DIN plug
	01XD12G	- Without positioning sensor feedback - L3-type 6-pin minifit plug
Accessory	01NV22 mounting bracket (Fig. 1)	Standard, mounting hole $\varnothing 6.4\text{mm}$, $\varnothing 8\text{mm}$ or $\varnothing 10\text{mm}$
	01X15 Clamp (Fig. 2)	Comply with the section shape and size of the outer tube.



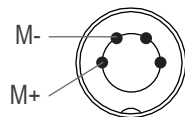
Fig. 1



Fig. 2

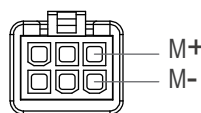
Cable Plug

• F-type plug



4-pin DIN plug

• L3-type minifit plug



6-pin minifit plug



F-type

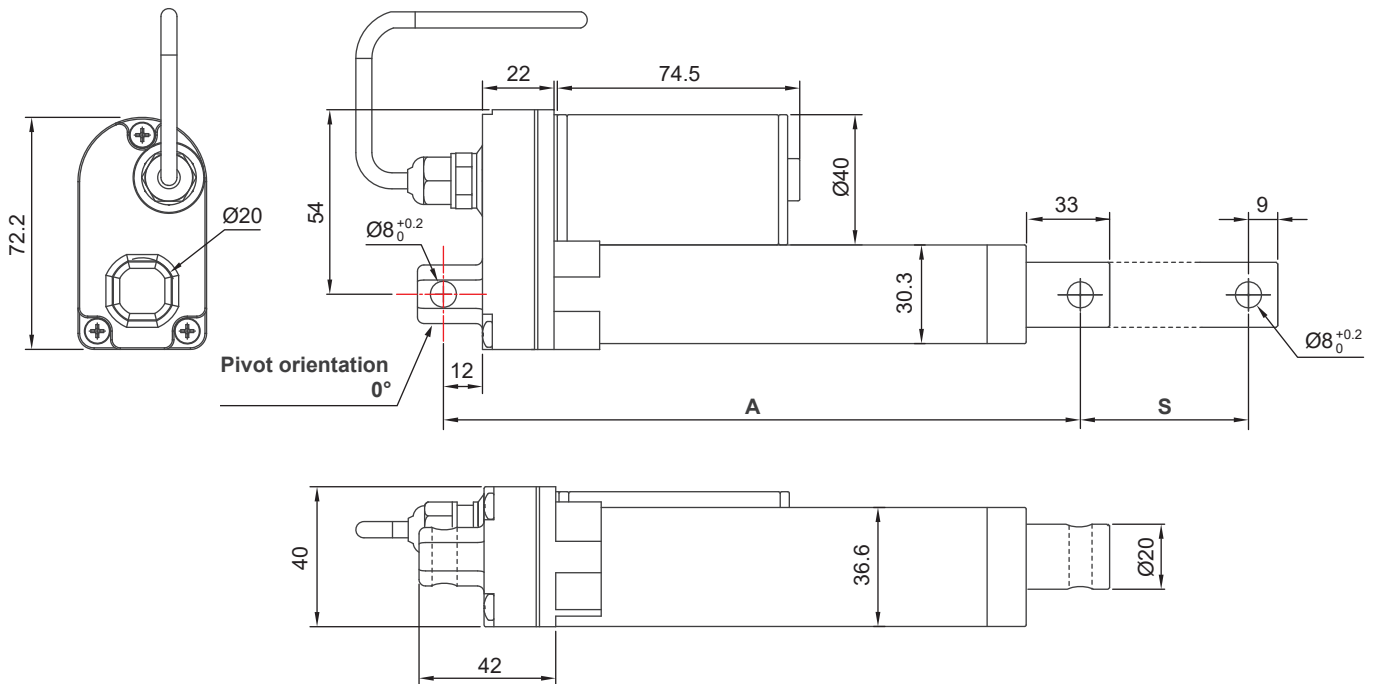
L3-type

Note:

Connect Pin (M+) to “+” & Pin (M-) to “-” of DC power, the actuators will extend.

Dimensions

• 01KS2



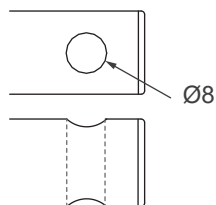
Note: As an example in 0° orientation for rear connector.

Front connector code	Retracted length (A)	Stroke (S)					
		50	100	150	200	250	300
1	$A \geq S + 109 \text{ mm } (\pm 3 \text{ mm})$	159	209	260	311	362	413
2	$A \geq S + 128 \text{ mm } (\pm 3 \text{ mm})$	178	228	278	328	378	428
3	$A \geq S + 138 \text{ mm } (\pm 3 \text{ mm})$	188	238	288	338	388	438

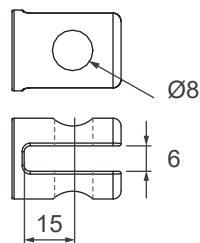
Available stroke (S) range = 50 ~ 300 mm
 Extended length = S + A

• Front connector

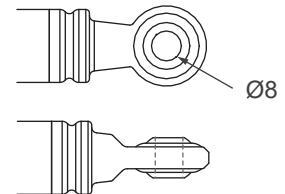
1: Drilled hole



2: Plastic slot

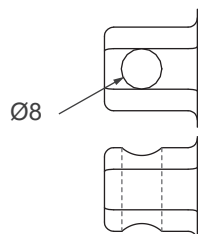


3: Spherical rod eye



• Rear connector

2: Metal



Ordering Key

01KS2 - 24 - 30 - E6 - 100 - C 3 2 - 54 - 3

Input voltage	24: 24V DC
Gear ratio	30: 30:1
Motor and Spindle type	E6 K6 (Refer to Performance Data)
Stroke	050: 50 mm 100: 100 mm 150: 150 mm 200: 200 mm 250: 250 mm 300: 300 mm
Front connector	1: Drilled hole 2: Plastic slot 3: Spherical rod eye (Refer to Dimensions)
Rear connector	2: Metal (Refer to Dimensions)
IP Protection level	43: IP43 (standard) 54: IP54
Cable length	3: 900mm straight 5: 1500mm straight 6: 2000mm straight