

17SH830o

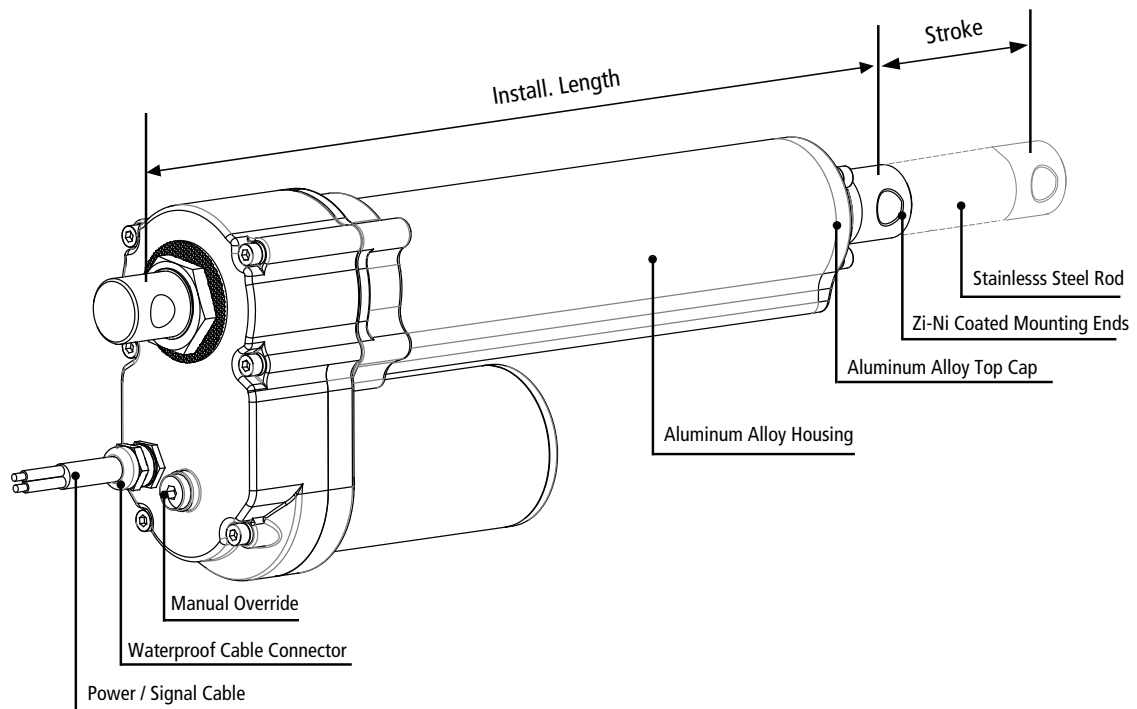
Data Sheet



Contents

- 11** Other Models
- 10** Inquiry Table
- 09** Position Feedback
- 08** Overall Dimension
- 07** Rear Mount. End
- 06** Front Mount. End
- 05** Chart of Load, Speed and Current
- 04** Configs. Load & Speed
- 03** Definition of Terms

Definition of Terms



Stroke	How far the rod extends outwards from the body. The difference between fully extended length and fully retracted length. [Customizable]
Install. Length	The fully closed size. [Customizable]
Front Mount. End	Optional.
Rear Mount. End	Optional.
Mount. Holes	Can be rotated by 90°.
Dynamic Force	The max force that actuator is able to carry when it is moving.
Selflocking	The max force that linear actuator is able to hold when it stops.
Weather Protection	IP XX. The first digit: dust protection. The second digit: liquid protection. Please refer to [Table 1].
Duty Cycle	Continuous working time 'a', rest time 'b'. Duty cycle is $a/(a+b) \times 100\%$. Please refer to [Table 1].
Speed	Include free-load speed and full-load speed.
Hall Sensor	Provide pulse signals. Displacement measurement is achieved through pulse counting, and the phase difference of the waveform can be used to identify the rotation direction of motor. Check [Table 1] to see if it is available.
Potentiometer	Potentiometer is a three-terminal variable resistor with a rotating contact which is used to measure the displacement of actuators. Check [Table 1] to see if it is available.
Manual Override	Can be used to extend or retract the actuator without power for emergency. Check [Table 1] to see if it is available.

Configs.

Color	<input type="checkbox"/> Silver	<input checked="" type="checkbox"/> Black	<input type="checkbox"/> Customized			
Lead Screw	<input checked="" type="checkbox"/> Acme Screw	<input type="checkbox"/> Ball Screw				
Operation Mode	<input type="checkbox"/> Electrical	<input checked="" type="checkbox"/> Electrical + Manual				
Application	<input checked="" type="checkbox"/> Industrial	<input type="checkbox"/> Furniture	<input type="checkbox"/> Medical			
Operational Temp.	<input type="checkbox"/> 5 to 40°C	<input checked="" type="checkbox"/> -10 to 65°C	<input checked="" type="checkbox"/> -40 to 65°C			
Operating Noise	<input type="checkbox"/> ≤45 dB	<input type="checkbox"/> ≤50 dB	<input checked="" type="checkbox"/> ≤65 dB			
Stroke Range	<input checked="" type="checkbox"/> 50-600mm	<input checked="" type="checkbox"/> 600-1,000mm				
Dynamic Load	<input type="checkbox"/> ≤1,200N	<input type="checkbox"/> ≤2,000N	<input type="checkbox"/> ≤4,000N	<input checked="" type="checkbox"/> ≤7,000N	<input type="checkbox"/> ≤12,000N	<input type="checkbox"/> ≤20,000N
Duty Cycle	<input type="checkbox"/> 10%	<input type="checkbox"/> 20%	<input checked="" type="checkbox"/> 25%*	<input type="checkbox"/> 50%	<input type="checkbox"/> 100%	
Motor Type	<input checked="" type="checkbox"/> Brushed DC	<input type="checkbox"/> Stepper Motor	<input type="checkbox"/> Brushless	<input type="checkbox"/> Servo Motor		
Overload Protection	<input type="checkbox"/> None	<input checked="" type="checkbox"/> Clutch	<input type="checkbox"/> Electronic	<input type="checkbox"/> Thermistor		
Weather Protection	<input type="checkbox"/> IP20	<input type="checkbox"/> IP43	<input type="checkbox"/> IP54	<input checked="" type="checkbox"/> IP65	<input type="checkbox"/> IP66	
Position Feedback	<input checked="" type="checkbox"/> None	<input checked="" type="checkbox"/> Endstop Signal	<input checked="" type="checkbox"/> Hall Sensor	<input type="checkbox"/> Potentiometer	<input type="checkbox"/> Encoder	<input checked="" type="checkbox"/> Reed Switches
Input Voltage	<input checked="" type="checkbox"/> 12VDC	<input checked="" type="checkbox"/> 24VDC	<input checked="" type="checkbox"/> 36VDC	<input checked="" type="checkbox"/> 48VDC	<input type="checkbox"/> 110VAC	<input type="checkbox"/> 220VAC



* Don't exceed four minutes continuous working at full load with 20°C.

Options for 17SH830o Other Models

[Table 1]

Parameters

Fill in code:

Code	Max. Dynamic Load ^②	Max. Self-locking	Reduction Ratio	Pitch	Speed ±10% ^① (mm/s)		Max. Stroke ^③
	(N)				(N)	-	(mm)
A	7,000	10,000	40:1	3.17	5.5	4.0	1,000
B	7,000	10,000	40:1	5	8.5	7.0	1,000
C	5,000	8,000	20:1	3.17	11.0	9.5	1,000
D	4,000	7,000	20:1	5	17.0	14.0	1,000
E	3,000	5,000	10:1	3.17	22.0	18.0	1,000
F	2,000	4,000	10:1	5	35.0	28.5	1,000

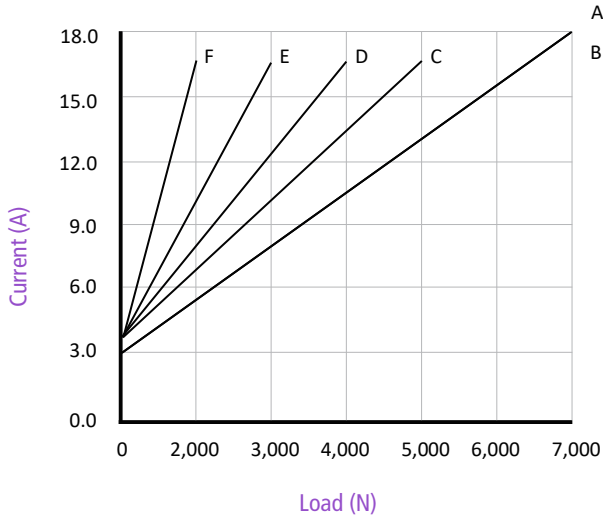
[Table 2]

- ① Measurements are made with actuators in connection with stable power supplies and ambient temperature at 20°C.
- ② For example, when real load is 3900N, choosing code (D) is fine. Of course, you can also choose (C), or (B), (A) which come with more load buffer, higher safety factor and longer product service time.
- ③ There are many factors affecting the "customizable maximum stroke", such as load, speed, force direction, etc., so the real application scenarios should be considered. If the parameters you required are not listed, please contact our sales engineers.

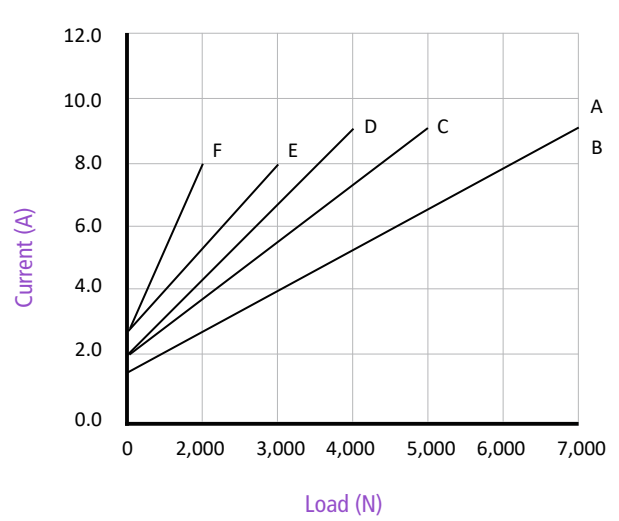
Charts

Fill in code:

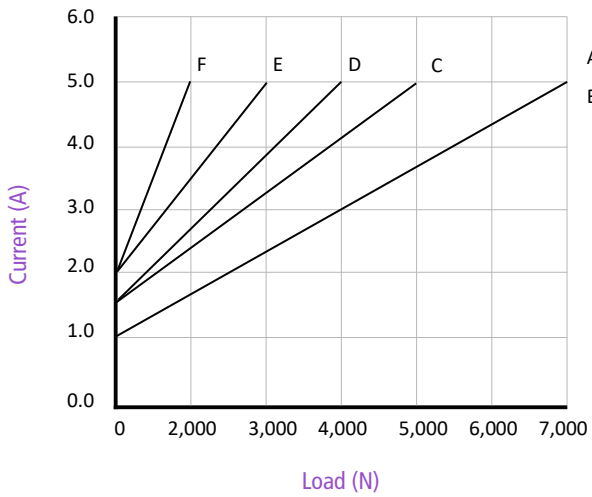
1 = 12v



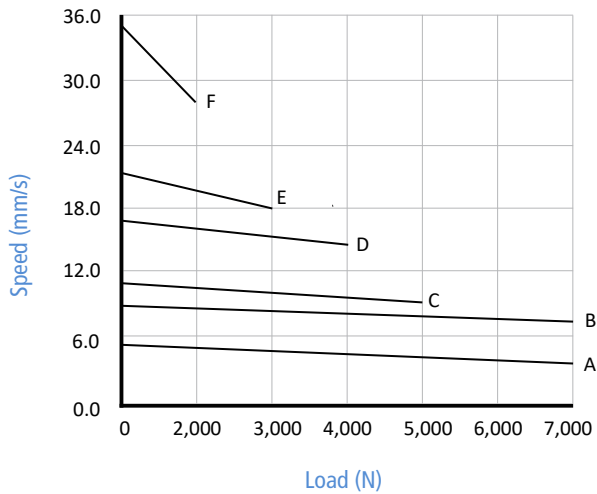
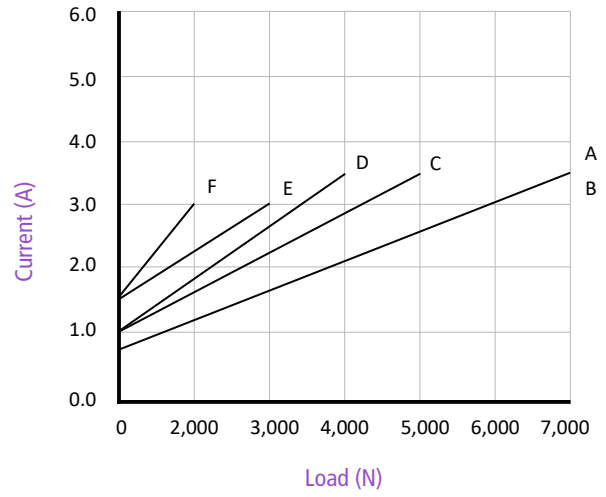
2 = 24v



3 = 36v



4 = 48v

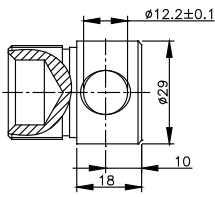


* Measurements are made with actuators in connection with stable power supplies and ambient temperature at 20°C.

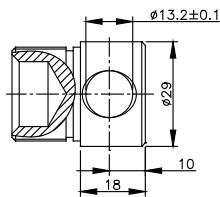
Front Mounting End

1. Please contact our sales team if none of the options below meet your requirements.

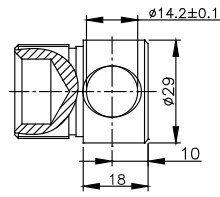
Fill in code:



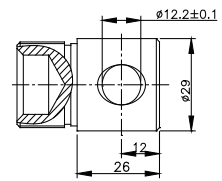
F01



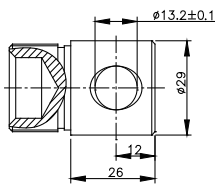
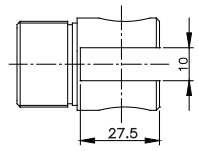
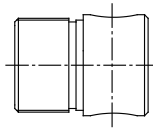
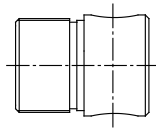
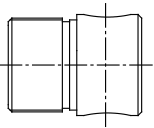
F02



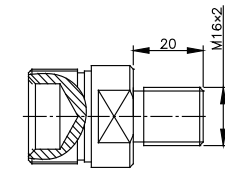
F03



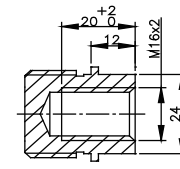
F04



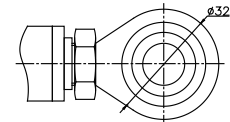
F05



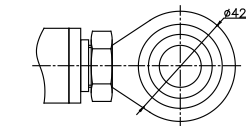
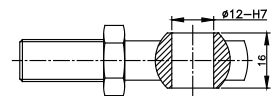
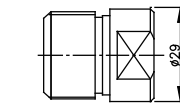
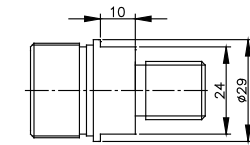
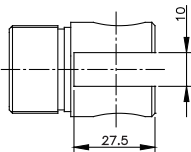
F06



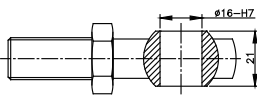
F07



F08



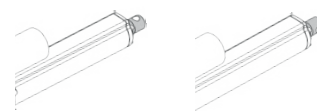
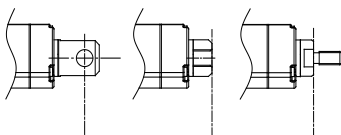
F09



2. Start of Installation Length

3. Hole Directions

Fill in code:



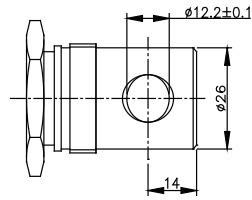
1 = 90°

2 = 0°

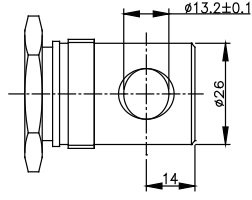
Rear Mounting End

1. Please contact our sales team if none of the options below meet your requirements.

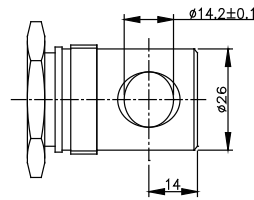
Fill in code:



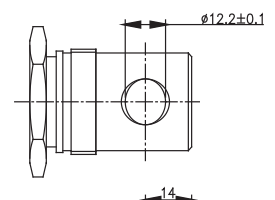
R01



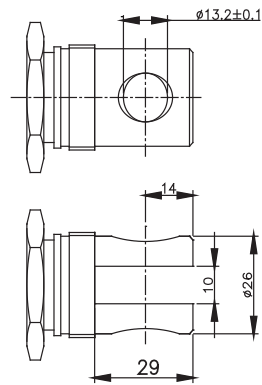
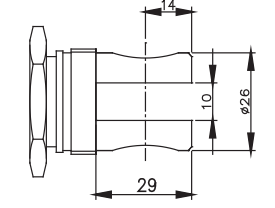
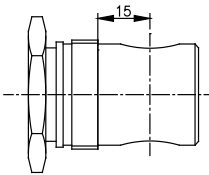
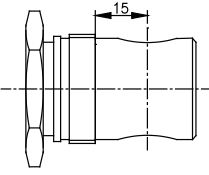
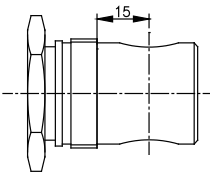
R02



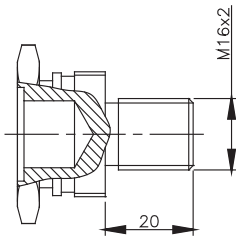
R03



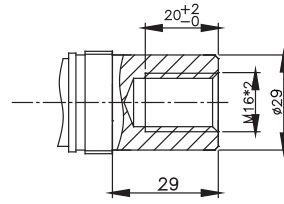
R04



R05

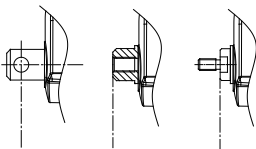


R06



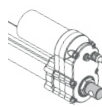
R07

2. End of Installation Length

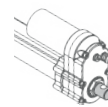


3. Hole Directions

Fill in code:



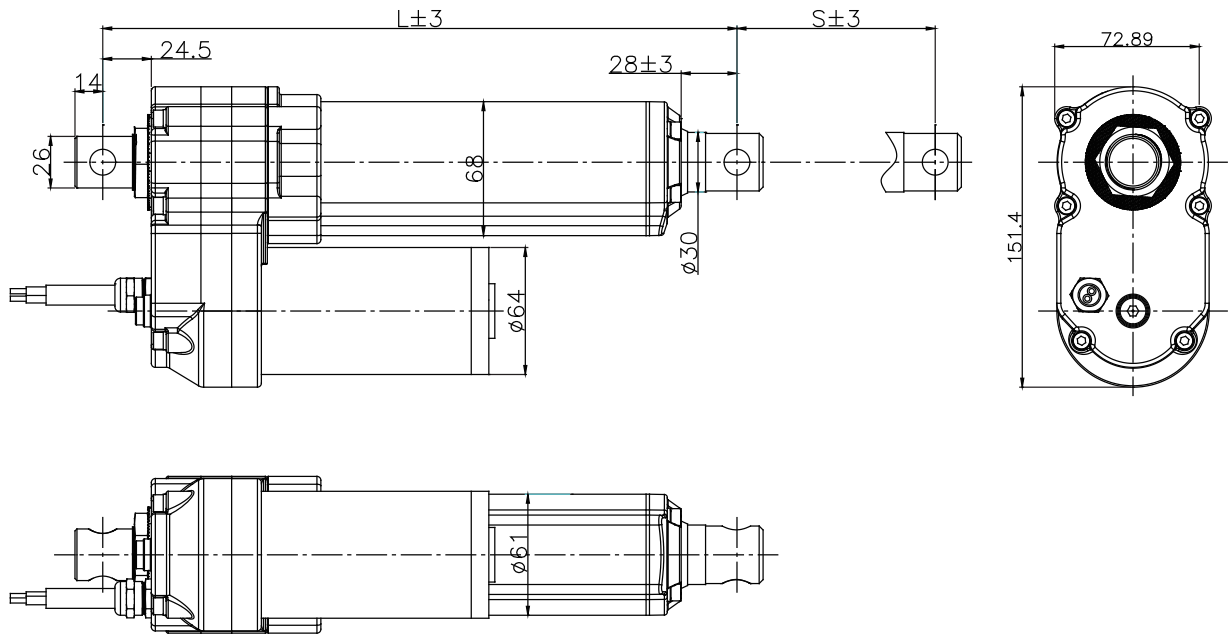
1 = 90°



2 = 0°

Overall Dimension

S = mm, L = mm



A. Mounting Ends VS Install. Length

Front Mount. Ends	Rear Mount. Ends
	R01, R02, R03, R04, R05, R06, R07
F01, F02, F03, F04, F05, F06, F07	$A \geq S+200$ mm (min. 260)
F08, F09	$A \geq S+250$ mm (min. 280)

[Table 3]

B. Stroke VS Install. Length

Stroke (S) (mm)	Install. Length (L) (mm)
50 - 299	+ 0
300 - 599	+ 50
≥ 600	+ 100

[Table 4]

How to calculate 'Install. Length' ?

S = Stroke, L = Install Length, $L \geq A + B$

Example

Front Mount.	Rear Mount.	S (mm)	A (mm)	B (mm)	$L \geq A+B$ (mm)
F08	R01	300	300+250	+50	≥ 600

[Table 5]

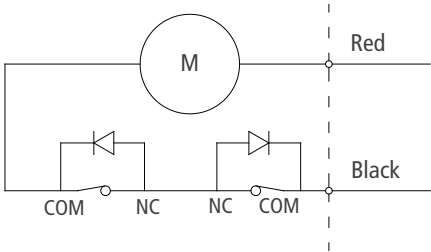
Signal Feedback

Fill in code:

- 0 = None
- 1 = Endstop Signal
- 2 = Hall Sensor
- 3 = Reed Switches

0. Standard Limit Switches without Signal feedback

Standard DJ830P comes with limit switches that shut off the motor automatically at the end of its travel.

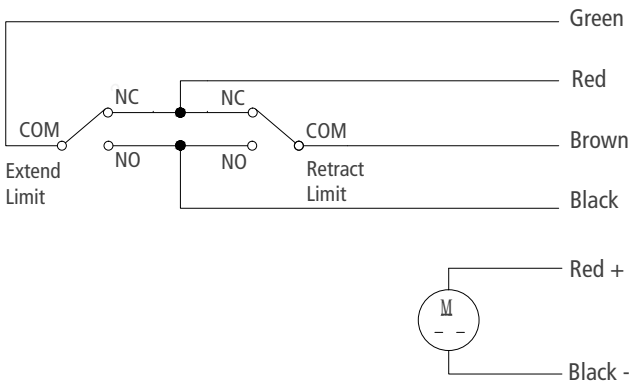


Wiring		
	Black	Red
Extend	-	+
Retract	+	-

[Table 6]

1. Endstop Signal

The actuator can be equipped with endstop signals output, but it will not auto-stop at neither end of the travel.



Power Wire Coding		
	Black	Red
Extend	-	+
Retract	+	-

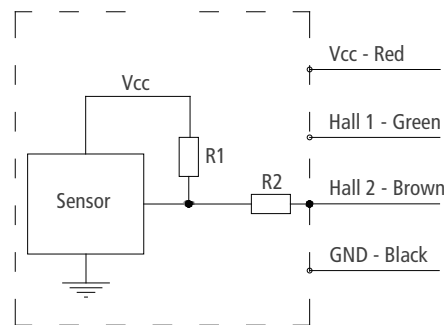
Signal Wire Coding	
Black	Extend / Retract limit, N.O.
Red	Extend / Retract limit, N.C.
Green	Extend limit. COM.
Brown	Retract limit. COM.

[Table 7]

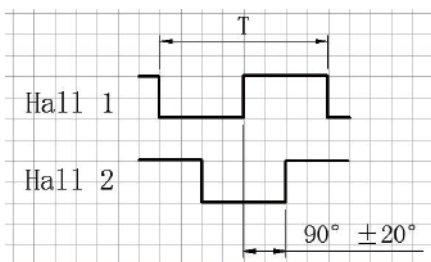
2. Hall Sensor (standard dual-sensor)

Code	Pulse Equivalent per Sensor (pulse/mm)	
A	4 pole pairs (standard)	50.5
B		32.0
C		25.2
D		16.0
E		12.6
F		8.0

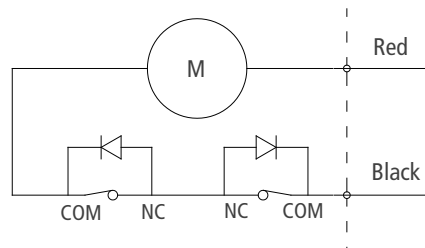
[Table 8]



* Power supply (V)= 5~15V



Oscillogram



3. Reed switch

БП] SP&S' =b>L'R' dPRt>_α] P[=t2L'R' dPRt

Inquiry Table

RESET

Voltage	1 = 12V	2 = 24V	3 = 36V	4 = 48V		
Load & Speed	See [Table 2]					
Stroke (mm)	Please contact us if the stroke you required is out of range.					
Install. Length (mm)	See Table [3] - [5]					
Front Mount. End	F01 - F09, or FX = Custom					
Rear Mount. End	R01 - R07, or RX = Custom					
Mount. Hole Direction	Front 1 = 90° 2 = 0°		Rear 1 = 90° 2 = 0°			
Signal Feedback	0 = None	1 = Endstop Signal	2 = Hall Sensor	3 = Reed Switches		
Cable Length	1 = 500 mm	2 = 1,000 mm	X = Custom			
Connector	0 = Tinned bared wires	1 = Go with KZ control	X = Custom			
Working Temperature	1 = -10 C to 65 C		2 = -40 C to 65 C			
Application	Working Frequency	Estimated cycles work per day				
	End Use	Indoor or outdoor, and please describe your end use.				
Your Contact	Company Name		Tel.		Email	

 You may also be interested in...

Model	Load (N)	Stroke (mm)	Speed (mm/s)	Install.Length (mm)	Overall Size (mm)	IP rate	Application
17SH803 (Track)	1,500	50-600	16-32	155	155 x 77.4 x L	IP20	Furniture
17SH823	3,000	50-600	5.0-15	S+155	148.5 x 80 x L	IP54	Furniture Medical Care
17SH810	4,000	50-600	5.0-32	S+150	156 x 83 x L	IP43	Furniture Medical Care
17SH801	6,000	50-600	4.7-28	S+175	156 x 83 x L	IP43	Furniture Medical Care
17SH822	6,000	50-600	5.0-16	S+175	166 x 91 x L	IP54	Furniture Medical Care
17SH806	1,200	50-600	5.5-80	S+105	40 x 75 x L	IP66	Industrial
17SH809	2,000	50-600	5.0-55	S+108	45 x 77.5 x L	IP66	Industrial
17SH825	2,000	50-600	6-15	S+115	43 x 84.5 x L	IP66	Furniture Medical Care Industrial
17SH820	2,500	50-600	2.5-22	S+120	64.5 x 102 x L	IP66	Furniture Medical Care Industrial
17SH8200	1,000	50-600	25-50	S+140	64.5 x 102 x L	IP66	Industrial
17SH830	4,000	50-600	5.5-35	S+200	76 x 151 x L	IP65	Industrial
* 17SH830o	7,000	50-600	5.5-35	S+200	76 x 151 x L	IP65	Industrial
17SH808	7,000	50-600	5.5-35	S+250	77 x 151 x L	IP65	Industrial
17SH805F	12,000	50-1,000	6.5-37	S+200	102 x 154 x L	IP66	Industrial

* You are now reading...